



# Products & Services Catalog



2024

Your Success is Our Success.

# Table of Contents



Table of Contents	1
About Norlift	2

## **WAREHOUSE PRODUCTS**

Industrial Racking and Shelving, Warehouse Design and Installation	3
Warehouse Automation, Automated Packaging Equipment	4
Norlift Superbench, Vises, Quantum Bins, Handtrucks / Carts	5
Electric and Manual Pallet Jacks, Wheels & Casters	6

## **MATERIAL HANDLING**

New and Used Forklifts	7
Floor Scrubbers and Sweepers	8

## **HEAVY EQUIPMENT**

JCB Construction Equipment	9
Heavy Equipment Attachments, Compaction Equipment	10
Operator Safety Training, Section 179	11

## **AFTERMARKET SUPPORT**

Heavy Equipment Rental, Tires and Tracks Replacement	12
OEM and Aftermarket Heavy Equipment Parts	13
Heavy Equipment In-Shop and Mobile Service	14

# Our *Story*

In 1951, Dick Jarvis received a life changing letter – he was in the Army now. A short time later he found himself working on the ships in Yokohama, Japan. There, he helped move equipment and supplies moving to the war front in Korea. To get the job done, he was put in charge of maintaining a fleet of forklifts.

In 1970, Dick received a call from Clark Forklift company – they were the premier forklift brand in the world at the time, and they needed a dealer in Spokane. Dick, his wife Ruth, and their six children sold their house in Portland, OR and used the money to start Norlift that same year.

He likely would have failed were it not for the help of wise and generous friends he made in Spokane. Following their example, Dick always looked to help others along the way. He helped many others start businesses and enterprises of their own, sharing freely of his experience and resources. Dick built Norlift into a successful business by serving others to their success.

Three generations later, our mission is still the same: **Serve to Succeed**. If we can help others achieve their goals, our success will naturally follow. We've grown and expanded to help thousands of businesses with their material handling, storage and construction equipment needs.

There's still more work to be done – and we're here for you no matter the job at hand.



## Customer *Testimonials*

“As the Director of Operation for 70 locations across the country, I rely on the Norlift staff for their expertise for all our racking and forklift needs. I have been using Norlift for over 25 years. They know what I want and I get what I need. No surprises and for me, that is a godsend. Thank you Norlift for making my job easier.”

**- Dave, Headwater Companies**

“From start to finish, the Norlift team made the process as easy as can be. Our forklift was delivered on time and in excellent condition. The crew that installed our pallet rack system was prompt, professional and incredibly fast. Moving our company into a new building was a lot of extra work for my team, but Norlift made this part of it painless and stress free. I would highly recommend them to anyone in the market.”

**- Tim, Tractor Beverage**



## Pallet Rack

**Pallet Rack** is a storage system designed to hold palletized items on horizontal shelves.

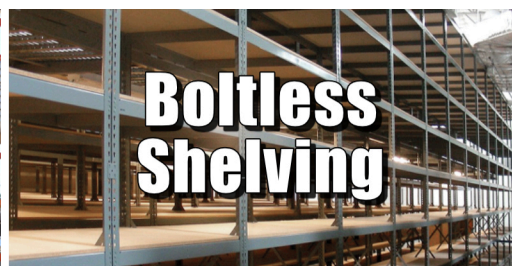
- Utilize more vertical space
- Load and unload materials using a forklift
- Various applications
- Basic components include **upright frames** and **cross beams**
- Upgrade your pallet rack by adding **wire deck** to help prevent products falling through



## Cantilever

**Cantilever Racking** is designed to store long or bulky materials.

- Store about any length materials including lumber, pipes, and furniture
- No vertical obstructions, so you are able to load your product with a forklift without the restriction of a front column
- Basic components include **bases**, **upright columns**, and **arms** that attach to the uprights



## Boltless Shelving

**Boltless Shelving** (or RiveTier) is an ideal shelving solution for industrial, wholesale, and/or retail applications.

- Can easily be assembled and reconfigured without any hardware
- Durable and versatile
- Low Profile option, weight capacity of **250-350 lbs/shelf**
- Long Span option, up to **1,400 lbs/shelf**
- All components are **sold by the piece** for easy configuration



No matter what your operation specializes in, we can design an optimized warehouse storage solution tailored to your needs from the ground up. Our experts will visit your site to survey the space and work closely with you to create a warehouse that meets your specific requirements.

### High-Density Storage Design

We excel in developing high-density storage designs that seamlessly integrate with the types of forklifts in your fleet and your available square footage. Our solutions include:

- Drive-thru racking, drive-in racking, narrow aisle configurations, and more

### Comprehensive Warehouse Design Services

Beyond racking configurations, our design services encompass a wide range of solutions to maximize your material flow, including:

- Conveyor systems, automation, mezzanines, modular offices, and more

### Assembly & Installation

When your purchase requires on-site assembly, installation, or anchoring, Norlift is here to help.

- Qualified personnel for on-site assembly, installation, and anchoring
- Quick and efficient assembly by experienced installers
- Tools and materials for long spans of Cantilever, Pallet Rack, and Boltless Shelving

### Project Management

For reconfiguring your current warehouse or moving to a new location, we offer comprehensive project management. Our services ensure a seamless transition and optimal setup.

- Custom warehouse shelving solutions
- Simplified business processes regardless of project size or scope
- Assistance in determining the best system for your space
- Seismic calculations, permit acquisition, and anchor inspections are handled by our Warehouse Solutions Consultant





While automating your current operation may be intimidating, Norlift can simplify your adoption and implementation with an array of professional teams and tailored technologies. Before introducing automation into your business, your warehouse and processes should first be analyzed and optimized. Norlift can help lay the groundwork for a successful implementation by working with Toyota Advanced Logistics and Bastian Solutions to assess everything from your facility layout to racking systems and forklift integration.



Advanced computer technologies are used to consider structural specifications, expected routes, material touchpoints, and more to create a warehouse that optimizes every interaction between associates, automated systems, and lift trucks.

### What is an AGV?

An Automated Guided Vehicle (AGV) is used to efficiently automate repetitive horizontal transport tasks in the material handling process. AGV's are ideal for putaways, long hauls, cross-docking and staging loads.

The automated Toyota Core Tow Tractor has a towing capacity of up to 10,000 lbs. Utilizing advanced sensors for mapped-object detection. The automated Toyota Center-Controlled Rider uses advanced environmental mapped-object detection to automate repetitive tasks, with a lifting capacity of 8,000 lbs. Utilizing Toyota's Pallet Jack as a base, which allows them to be operated manually as needed.

Talk to us to see if, when, how, and where automation would make the most sense—and have the biggest impact—in your

Reduce  
Operational  
Costs

Improve  
Productivity

Eliminate  
Safety  
Risks

Reduce  
Processing  
Time

Space  
Optimization

Robopac USA's semi-automatic stretch wrappers are ideal for low-throughput or rotating product lines. These portable, adaptable, and space-saving machines include semi-automatic shrink wrapping machines, turntable stretch wrappers, and rotary arms.



For high-volume facilities, Robopac's automatic stretch wrap machines ensure consistency, speed, and full automation. They streamline your packaging process, delivering securely wrapped goods without damage.

Robopac's automatic pallet wrappers, made from superior materials, exceeds expectations. Available in turntable, horizontal, and vertical configurations, these machines save time and money, allowing you to reinvest in your business. Various speeds and capacity levels are available to meet your industry's specific needs.

### Industries Served



Beverage



Dairy



Distribution



Food



Home &  
Personal Care



Paper



Plastics



Wood & Metal  
Working

The **Robot S7 Semi-Automatic Stretch Wrapper** is the most innovative, portable stretch wrapper on the market!

The Robot S7 can be up and running in less than 30 minutes when installed by a certified Robopac dealer. It's easy to use thanks to Robopac's intuitive seven (7)-inch icon-driven color touchscreen.

The portability alone can deliver 25% or more in productivity improvement. The Robopac USA semi-automatic pallet wrapper is a GREAT solution for customers who have extremely large loads, as the Robot S7 can wrap loads of any length and width.





# SUPERBENCH

The Superbench is perfect for warehouses, shops, garages and more! Our benches are made with uncompromising quality to stand up to the heaviest use. If you want nothing but the best for your business or shop, Norlift is the first and only choice.

- Solid steel construction
- Expert fabrication
- **Weight capacity of up to 3,000 lbs**
- Heavy-duty frame to provide extra support for heavy loads
- Perfect for commercial and residential use
- Perfect for warehouses, shops, garages, & more
- Variety of additional add-ons available including: Vises, Casters, Drawers, Lower Shelf, & more



### SE BASH 5" ATV Incl. 2-1/2lb Sledge Hammer & SE Mounting Bracket



- Jaw Width: 5"
- Pipe Jaw Capacity: 7/8 to 3"
- Throat Depth: 4-1/4"

### SE TRADESMAN 1755 Vise & B.A.S.H 20416 Sledge Hammer



- Jaw Depth: 1/2"
- Jaw Height: 3/4"
- Jaw Width: 5-1/2"
- Mounting Points: 4
- Throat Depth: 3-3/4"
- 360° Swivel

### Black 746 Mechanics Vise & 3-pc 400 Series C-Clamp Set



- Jaw Width: 6"
- Mounting Points: 4
- Pipe Jaw Capacity: 1/4 to 3-1/2"
- Throat Depth: 4-1/8"
- 360° Swivel



**Shelf Bins** can replace worn out bins permanently with high density plastic.

- Built-in rear hanglock allowing bins to tilt out for complete access
- Wide hopper front allows complete access to the contents
- Durable polypropylene material
- Waterproof & resistant to most chemicals
- Optional dividers available



**Stackable Bins** can be stacked on top of each other, utilizing vertical space.

- Anti-slide locks to keep bins in place
- Built-in rear hanger to hang from louvered panels
- Durable polypropylene material
- Waterproof to resist rust & corrosion
- Resistant up to 250°F & extreme cold
- Optional dividers available



2-Shelf Service Cart



Oil Drum Dolly



Collapsible Triangle Drum Dolly

When your material handling needs don't require heavy equipment, Norlift carries a variety of handtrucks, appliance dollies, dry-wall carts, hoppers and more! Make sure you check out our used cabinets, carts, and bins selection too!



General Handtrucks



Appliance Dollies



EZE-OFF Handtruck



Barrel Truck Drum Dolly



### Used Linkable Carts

Steel or wood top linkable carts with removable handles. These carts have a capacity of 3,000 lbs and a size of 36"W x 60"L with 4" caster wheels. Additional fabrication is available to cut links. **Discounts available when 4 or more are purchased.**

Original Price: \$195

**Current Price: \$135/each**

**MANUAL PALLET JACK**

- Quality parts, durable frame
  - **Nylon** and **Poly** wheel options
  - Pivot mounted poly wheels
  - 180° steering arc
- Load Capacity: **5,500 lbs**  
 Lift: **7.75 inches**  
 Fork Length: **48 inches**  
 Fork Width: **27 inches**

**Price: \$640 or \$650**

**Order Toyota Pallet Jacks Online**

**NORLIFT** HEAVY MACHINERY **MY TOYOTA STORE**

**SCAN HERE**




**TORA-MAX PALLET JACK**

- 3.1 MPH travel speed
  - 24-Volt electric system
  - Built in charger
  - **Distribution, manufacturing and warehousing**
- Load Capacity: **4,000 lbs**  
 Lift: **5.6 inches**  
 Fork Length: **48 inches**  
 Fork Width: **27 inches**

**Price: \$3,770**



**EKKO A25**

An inexpensive pallet jack option for those loading and unloading trucks, loading docks, stock rooms, manufacturing floors, warehousing.

Load Capacity: **5,500 lbs**  
 Wheel Type: **Polyurethane**  
 Fork Length: **48 inches**  
 Fork Width: **27 inches**

**Price: \$300**



**Doosan HPT28**

Not only do you get durability with the Doosan pallet jack, but you also get longevity. With enclosed bearings guard against failure from dust and prolongs service life.

Load Capacity: **5,500 lbs**  
 Wheel Type: **Polyurethane** or **Nylon**  
 Fork Length: **48 inches**  
 Fork Width: **20.5" (Narrow)** or **27" (Standard)**

**Price: \$495**



**Noblelift PTE45N**

Increase your work productivity with this economical, quiet, very low maintenance, ultra-smooth, fully electric pallet jack. It is the **ideal choice for medium duty** operations. With a maintenance-free lithium battery with one-hand removal, and a tight turning radius.

Load Capacity: **4,500 lbs**  
 Fork Dimensions: **27x45.3 inches**  
 Load Center: **24 inches**  
 Power: **48V (Lithium-ion)**

**Price: \$3,950**



**Norlift has the largest in-stock selection of Wheels and Casters in the Inland Northwest!**

Bring in the caster or wheel that you want replaced and we'll find its perfect match. If you don't know what you want yet, our experts can help you find what you're looking for and make your project come to life! We also stock and sell components separately so any caster assembly can be built for you.



When it comes to material handling equipment, forklifts are the workhorses that streamline operations across various industries. We offer a range of forklifts from Toyota, Doosan (now Bobcat), Hangcha, and NobleLift, each designed to cater to specific needs and challenges. Contact us today to speak with a specialist to get help finding the right lift for your needs.



Toyota Forklifts, the top brand in the industry, are renowned for their quality, durability, reliability, and value. Their lineup includes forklifts, reach trucks, order pickers, pallet jacks, container handlers, scissor lifts, tow tractors, AGVs, and automated material handling solutions. Designed for loads from 3,000 to 125,000 lbs, Toyota Forklifts excel in diverse industrial applications.

Bobcat Material Handling upholds Doosan's legacy of durable, reliable, and cost-effective products. Now branded as Bobcat, the range includes IC, LPG, and Electric forklifts with capacities from 3,000 to 55,000 lbs. Customers continue to enjoy high-quality performance, now backed by the trusted Bobcat name.



Hangcha Group offers a comprehensive line of IC, LPG, Electric, and Lithium-ion forklifts. HC Forklift America delivers quality forklift and warehouse products, a vast inventory of spare parts, and the essential services to support dealers and customers nationwide. For customers affordable quality, Hangcha Forklifts are an excellent choice.

Noblelift's OP8.5 Stock Picker, with an 850 lbs capacity and 360-degree zero-turn radius, offers dual-side picking and a 196.8" working height. Designed for easy access through elevators and doorways, it features a built-in charger and quiet, low-maintenance lithium-iron technology. Ideal for order picking, stocking, inventory management, and overhead maintenance, this machine enhances productivity with smooth performance.

Buying used equipment can save your business thousands and help expand your warehouse fleet. At Norlift, we offer a carefully selected range of **used construction equipment and forklifts** in Spokane, Washington. We know your business needs reliable machinery to keep production moving, so we make sure all pre-owned material handling and construction equipment that enters our facility is ready for many years of operation. **Upon arrival, each unit is thoroughly inspected by our team of experienced technicians.** Grease zerks must take grease, dirty fluids are changed, any leaky cylinders resealed, and all safety equipment is inspected and repaired if non-functioning. In a nutshell, **we ensure each piece of equipment is ready to operate safely and consistently for years to come.**

**Scan the QR code** to access our full list of used forklifts and heavy equipment. If you have questions about our inventory, want a quote, or need help deciding what your business needs, we're here to assist you. Can't find the model you need or looking for something even more reliable? Check out our inventory of new equipment!

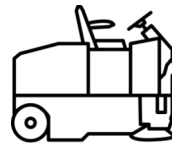




**FACTORYCAT**



**KODIAK**  
Imported From Wisconsin - USA



**Industrial Sweepers: Your Solution for Spotless Floors**

**Floor Scrubbers that Won't Break the Bank**

FactoryCat has been building floor scrubbers since 1986 in the USA. Unlike cheap foreign imports, FactoryCat scrubbers feature heavy-duty all-steel frames, quality in-house molded tanks, and are expertly assembled by well-trained equipment specialists.

Following in FactoryCat's footsteps, Kodiak is a division of RPS Corporation so each piece of equipment is equipped with the same durability and design as a FactoryCat but at a budget conscious cost to you. Find a machine with a cleaning path anywhere between 17" to 46".

**Why Choose FactoryCat?**

- **Tip Back Tank:** Easily serviceability access without tools, providing easy top side access to all service items.
- **Large Clear Lid:** Provides the operator with a real time view of the dirty water level, foam, debris tray, the vacuum's white dust filter, and more.
- **Steel Frame:** With stainless fasteners for longevity and service ease in the future.
- **Stainless Squeegee:** Parts exposed to water are stainless steel for longevity and a range of materials available for different applications.

**Why choose Kodiak?**

- Durable equipment that will last for years
- Quality alternative to used, reconditioned, demoed or cheap imported products that break
- Assembled with American Labor
- Parts and technical support 2<sup>nd</sup> to none
- Comparable in price to mid-lower segment equipment, but not cheaply made
- Reduced cost to build due to simplicity in design

**Available: Walk Behind & Ride On, Floor Scrubbers & Sweepers**

**Available: Walk Behind & Ride On, Floor Scrubbers**





Introducing the JCB 3TS-8T Teleskid, the first skid steer with a telescopic boom. This groundbreaking machine reaches higher, further, and digs deeper than any other skid steer on the market, accessing areas you never thought possible.

- **Enhanced Safety:** Side-door entry so operators are no longer required to enter/exit through the front – unlike competitors
- **Undeniable Comfort:** The cab is 33% larger than the industry average
- **Lift Height:** 13'3"
- **Forward Reach:** 8'
- **Dig Depth:** 3'
- **Engine Power:** 74 hp
- **Operating Capacity:** Up to 3,695 lbs



The JCB 1CXT Backhoe Loader is a versatile and compact machine that combines excellent material handling and excavating capabilities with the footprint, versatility, and maneuverability of a compact track loader. This makes it an ideal choice for various construction and landscaping tasks.

- **Superior Maneuverability:** Easily navigates tight spaces
- **Compact Size and Low Weight:** Easy to trailer and tow, often without a Commercial Driver's License
- **Engine Power:** 49 hp engine requires no after treatment
- **Max Dig Depth:** 8'4" - 10'1"
- **Max Reach:** 11'1" - 12'10"
- **Max Loadover Height:** 7'9" - 8'9"
- **Operating Weight:** 9,396 lbs - 9,572 lbs



Introducing the JCB 35Z-1 Compact Excavator, the New Generation 3.5T zero tailswing mini excavator designed for precision and safety in confined spaces. With its 100% steel bodywork and no need for electronic control, aftertreatment, or EGR, this T4F machine is built for reliability and performance.

- **Max Dig Reach:** 16'11"
- **Max Dig Depth:** 10'6"
- **Max Dig Height:** 15'
- **Max Dump Height:** 11'1"
- **Bucket Tearout:** 7,284 lbf
- **Tailswing:** Zero
- **Engine Power:** 24.7 hp
- **Operating Weight:** 7,840 lbs



# CLEAR THE WAY

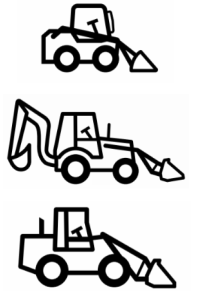
MORE PRODUCTIVITY. MORE PROFITABILITY.



**SnowWolf**

The snow removal attachments from SnowWolf are the most advanced plows in the industry. This innovative attachment will help your business increase efficiency, profitability, and operator satisfaction.

- Clear snow and ice in the most efficient way possible
- One attachment, four functions with AutoWings - angle, push, backdrag, and wide-angle plowing with one attachment
- 165° rotation for excellent multi-directional
- **Additional Accessories:** WolfPaws snow tires to SpillGuards, ActivEdges, FlexFrames, and more!
- **Available for Skid Steers, Wheel Loaders, Front Loaders, Tractors, and other machinery**



**FECON**

## Bull Hog Attachments

For 30+ years, Fecon has been home of Bull Hog brush cutting and forestry mulching attachment.

- **Skid Steer:** Standard to High Flow
- **Excavator:** 3.5 to 45 Ton Mulching Head

## Forestry Attachments

Fecon's forestry attachments are built to last with a variety of options including deck mowers, grapples, and tree shears that are designed and customized to arrive fully compatible with your excavator or skid steer. No matter the drive system or horsepower capabilities of your machine, there is an attachment for you.

- Deliver excellent ROI for the equipment investment
- **Skid Steer:** Deck Mulcher, Rotating Grapple, Tree Shear, Disc Hawk
- **Excavator:** Disc Mulcher, Power Pack

## Why **STEELWRIST** ?



Power through your toughest jobs with the Tiltrotator. Increase productivity, safety, and versatility on heavy equipment by connecting hydraulic attachments in seconds without leaving your cab. With 360° continuous rotation, you are able to reach the toughest places without ever re-positioning your machine resulting in a time-saving, labor-reducing attachment that is perfect for any professional.

Elevate your compaction experience with MBW's advanced line of compaction equipment, expertly designed to enhance efficiency and prioritize operator comfort by significantly reducing hand and arm vibration during operation.



### Rammers:

- Ideal for compacting granular, mixed, and cohesive soils in confined areas
- A staple in contractor and municipal fleets
- Features the industry's only percussion system free of high friction/heat metal-on-metal wear surfaces

### Vibratory Plates:

- Renowned worldwide, MBW's vibratory plates offer long product life with minimal maintenance
- Product life often extends to decades
- Self-cleaning plate prevents dirt build-up





**WATCH NOW**  
STEELWRIST TILTROTATOR

DO MORE THAN DIG  
WITH STEELWRIST!



**IN-HOUSE TRAINING:**

Norlift offers the most comprehensive in-house operator training in the Inland Northwest.

- Electric, IC Cushion, & IC Pneumatic forklifts
- Regularly scheduled classes with classroom instruction and hands-on time with the equipment

**\$150 / person**

**OPERATOR SAFETY TRAINING**



**Interested in our Train the Trainer program?  
Give us a call for more information!**

**ON-SITE TRAINING:**

Do you have a whole team that needs to be trained on heavy equipment? Ask about our on-site training option!

- Electric, IC Cushion, IC Pneumatic, Narrow Aisle Trucks, Electric Pallet Jacks, & Scissor Lifts
- Operators trained on the equipment they use daily
- Scheduled around your availability

**\$995 Minimum  
(\$195 / person)**



Stay safe when operating a telehandler. Proper training is crucial to prevent accidents and comply with OSHA regulations. Telehandlers, also known as telescopic handlers, boom lifts, or variable reach forklifts, present significant hazards if operated unsafely. Norlift offers certified courses in the Inland Northwest to equip you with the skills to operate telehandlers safely and legally. Training includes OSHA-compliant instruction, hands-on experience with industrial equipment, and certification upon completion. Key safety practices include understanding load limits, using stabilizers, maintaining clear visibility, and conducting regular equipment inspections. Contact us to schedule your training session and learn more about pricing.

**Call for scheduling and pricing your next telehandler training!**

Take advantage of Section 179 and make the most out of your equipment purchases this year with Norlift's wide range of qualifying equipment. Whether you're investing in new or used machinery, Section 179 allows you to fully write off the cost from your taxes, provided the equipment is put into service by December 31, 2024. This powerful tax incentive lets you deduct up to \$1,220,000 in equipment costs on your 2024 taxes, boosting your bottom line and enhancing your operational capabilities.

**Explore Norlift's extensive line of equipment that qualifies for Section 179, including:**

- Toyota Forklifts
- Bobcat Forklifts
- Hangcha Forklifts
- JCB Heavy Equipment
- Robopac USA
- FactoryCat & Kodiak

Don't miss out on this incredible opportunity to upgrade your equipment, expand your business, and enjoy significant tax savings all at once!

**SECTION 179 TAX DEDUCTION  
NOW'S THE TIME TO BUY**





Are you anticipating a delivery and in need of an **extra lift for the day?** Is your equipment undergoing maintenance, requiring a temporary **replacement for a week?** Perhaps a busy season that you could benefit from an extra helping hand? Rest assured, we also provide **long-term rentals** to fulfill all your job requirement needs.

Our commitment to customer service sets us apart, ensuring that your rental experience is smooth, efficient, and hassle-free. With our large fleet of heavy machinery, including *various forklift capacities*, the impressive *JCB Teleskid*, the reliable *Toyota Electric Pallet Jack*, and a high-capacity *Hangcha Rough Terrain Forklift*. We have the equipment you need to tackle any project.

Don't settle for anything less than the best. Schedule your rental with Norlift today and discover the difference that our top-notch service and high-quality machinery can make for your business.

## Rental Requirements:

- Certificate of insurance
- Business to business rentals only, no personal use rentals available



Fresh tires and tracks are an excellent way to keep your machine running smooth and keeping your downtime low! It is also one of the most important parts of preventative and planned maintenance. Not only is worn tread a safety hazard to you and your employees, but over-worn tread can also put more strain on the rest of the machine resulting in parts needing replaced sooner.

We carry and stock a variety of Smooth Black and Non-Marking Grey Michelin/Camsco forklift tires. There are also various tread types available including Solid, Air Pneumatic, and Cushion tires.

With **two Mobile Tire Press trucks**, our tire experts are able to travel throughout the Pacific Northwest to replace your forklift tires, wheeled skid steer tires, track loader tracks, and excavator tracks. Our tire specialists are able to work on all makes and models of material handling and construction equipment. From Omak, Washington to West Yellowstone, Montana – we will come to you! Give us a call to have your tires or tracks replaced, either at your work site or in our shop!



**Do your Tires or Tracks Need Replacing?**



We stock a large inventory of quality OEM and aftermarket parts and accessories for JCB, Bobcat/Doosan, and Toyota. **With access to quality parts for all makes and models** of industrial equipment, our experts are able to quickly and accurately find the parts you need and have it within 24 hours.



- Oil Filters
- Air Filters
- Transmission Filters
- Distributor Cap
- Rotor
- Plugs/Wires
- LPG Regulators
- Brake Shoes
- Drive Axle Seals
- Strobe Lights
- Headlights
- Blue and Red Safety Lights
- Backup Alarms
- Seats
- Forks
- Fork Extensions
- Propane Tanks
- Daily Checklists
- & More!

### Understand the Importance of Routine Maintenance

Heavy equipment maintenance intervals are based on hours, and the working environment is also a consideration, so it is important that the hour meter is always in good condition so you know when it's time for service. If your equipment is not already being serviced routinely, give us a call and we will tailor a routine that suits your needs.

### Getting the Correct Part

It is absolutely crucial to always provide the full make, model, and serial number of your machine when ordering parts. Ensuring you get the correct part the first time.

### Equipment Data Plate

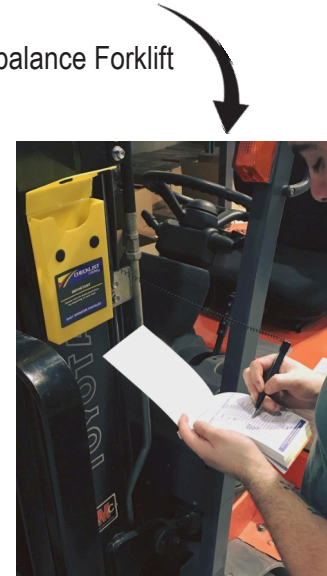
The data plate is vital in getting the correct information regarding your forklift including lifting capacities, model, and serial number. *Missing or Unreadable?* We can replace that too!

### Periodic Replacement of Parts & Lubricants

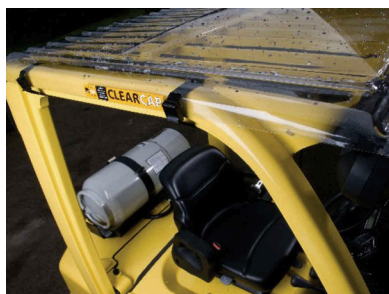
Periodic maintenance is fundamental to the operation of a forklift. Depending on the part, they should be replaced either every 250 hours, 500 hours, 1,000 hours, 2,000 hours, or every 2 years. Parts may need to be replaced more often if used in a tougher work environment.

### Checklist Caddy Kit

- Complete inspection checklist system for various equipment types
- Must be used before each shift; records kept for office compliance
- Includes durable, visible storage case for easy equipment mounting
- Each checklist book contains 75 carbonless copy daily forms
- Components: checklist book, plastic pouch, and pen included
- **Inspection forms available for:**
  - Internal Combustion & Electric Counterbalance Forklift
  - Narrow Aisle / Reach Truck
  - Electric Pallet Truck
  - Mobile Elevated Work Platform
  - Electric Stacker



### ClearCap Cover



The **ClearCap Forklift Roof Cover** design is simple yet very effective. This cap has you covered, rain or shine, with a clear roof cover for all forklift makes and models.

- Hard plastic cap
- 37"W x 43.5"L
- Non-yellowing and UV resistant
- Easy installation, held on with nylon straps



### Forkshield Canopy



The **Forkshield Universal Forklift Canopy** features a fit for all lifts on the market, and has the versatility to be used as a canopy or windshield.

- Vinyl cap and/or windshield
- 45"W x 33"L
- Non-yellowing and scratch resistant
- Easy installation, held on with bungees





**TAKE FORKLIFT  
BREAKDOWNS  
OFF YOUR PLATE**

**WE'LL TAKE CARE OF IT, WITH  
QUALITY PARTS AND A  
COMPREHENSIVE SERVICE PLAN  
THAT KEEPS YOUR FORKLIFTS  
WORKING, SO YOU CAN TOO.**

**Mobile Repair Services**

When your forklifts or compact construction equipment break down, Norlift will dispatch a technician to your site quickly. Our road service technicians can handle most on-site repairs to minimize downtime. For extensive repairs, we can work 'off hours' to reduce workflow interruptions. With resident technicians in Lewiston, Idaho, and several locations in Montana, we ensure a fast response. From oil changes and tire repairs to parts replacement, Norlift's team is here to help. Call us today to schedule your equipment repair and service.

- Known for the fastest response time in the Inland Northwest
- Large staff of experienced certified technicians
- Automotive Service Excellence (ASE) Certified Technicians
- Competitive planned maintenance agreements prevent problems before they happen
- Our rental fleet is standing by to keep your business running smoothly while your equipment is in the shop
- Service for all construction & material handling models



**In-Shop Repair Services**

Norlift offers top-notch in-shop repair services at our Spokane facility, ensuring your equipment gets back to work quickly and efficiently. Our experienced technicians are ready to handle repairs on a wide range of equipment with professionalism and expertise.

- **Facility:** 6,000 sq. ft. repair facility equipped with advanced tools and systems
- **Technicians:** Skilled in servicing all major makes and models, including JCB and Toyota
- **Equipment Serviced:**
  - Compact construction equipment
  - Material handling equipment
  - Dock equipment (loading docks, dock plates, dock ramps, scissor lift tables, shrink wrap machines)
  - Manual and electric pallet jacks
  - Floor scrubbers and sweepers
  - Attachments and more
- **Convenience:** Delivery truck available to pick up your equipment and provide a rental if needed
- **Efficiency:** Minimize downtime with our prompt and reliable repair services



**PICK-UP AND DELIVERY >>**

*Do you need to move equipment between job sites but no way to transport?*

That's where we come in. Norlift will pick up your equipment, load it on the truck, and transport the load **anywhere in the Inland Northwest.**

- Max load capacity to Spokane and the surrounding areas: **24,000 lbs**
- Max load capacity to Montana: **24,000 lbs**
- Max load dimensions: **24-26' L x 8' W x 9'8" H**

Have an oversized load that exceeds our limits? Give us a call and we'd be happy to come up with a solution for you!



## Service Territory Map

The Norlift Service Territory Map spans a broad area from Eastern Washington to Northern Idaho and Western Montana, ensuring comprehensive coverage for all our customers. Our skilled technicians are equipped to service all makes and models of material handling forklifts and construction equipment. Whether it's an emergency breakdown or a regularly scheduled planned maintenance program, Norlift is prepared to handle any service need efficiently and reliably.

